

TRUCK-MOUNTED CONCRETE PUMP SYG5370THB 490C-10(SZ-SL)



Energy-saving

- Pump efficiency is increased up to 25% while fuel consumption is decreased by up to 10%.



Safety

- Our truck mounted concrete pump exemplifies Sany's precise, rigorous manufacturing philosophy and uncompromising focus on safety.



Highly Wear Resistant Parts

- The highly wear resistant parts improve efficiency and reduce down time.



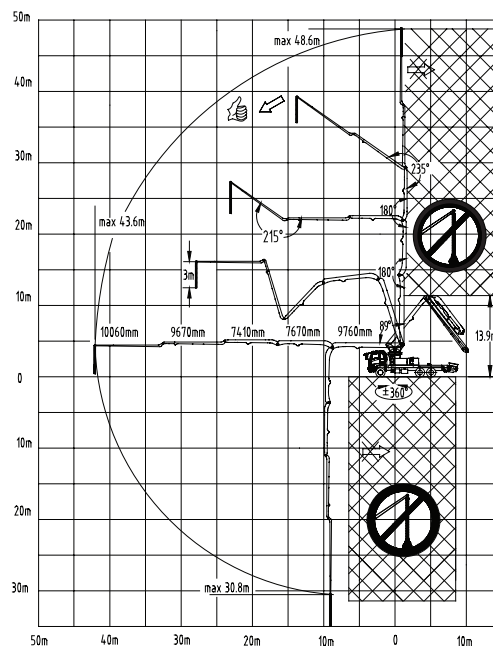
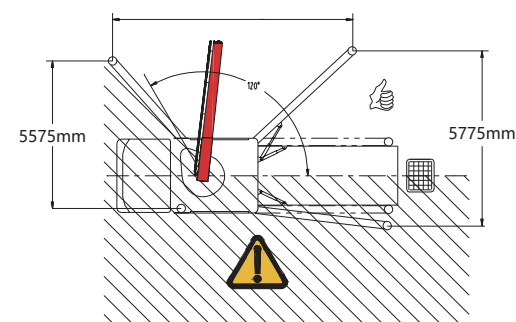
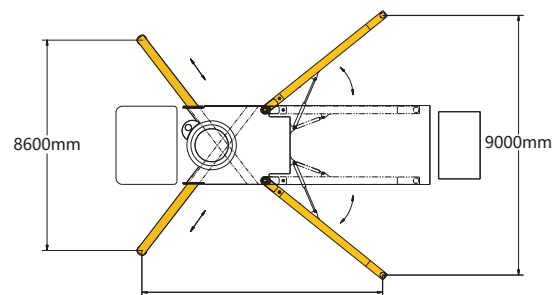
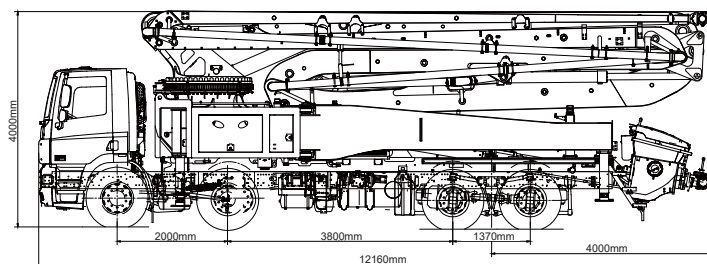
Self-diagnosis Technology

- Continually monitors more than 200 aspects of the system during operation. Faults are displayed on the monitor. Review of the detected faults can reduce troubleshooting time by 70%.



TECHNICAL SPECIFICATION

Model		Unit	SYG5370THB 490C-10(SZ-SL)
X-unit Spe.	Length	mm	10350
	Width	mm	2550
	Height	mm	3600
	Dead weight	kg	25390
Boom & Outrigger Specification	Vertical reach	m	48.6
	Horizontal reach	m	43.6
	Reach depth	m	30.8
	Unfolded reach	m	13.9
	1st Section	Length	9760
		Articulation	89°
	2nd Section	Length	7670
		Articulation	180°
	3rd Section	Length	7410
		Articulation	180°
	4th Section	Length	9670
		Articulation	235°
	5th Section	Length	10060
		Articulation	215°
Pumping System Specification	Rotation		± 360°
	Front outrigger spread L-R	mm	8600
	Rear outrigger spread L-R	mm	9000
	Output	Low-pressure	m³/h 200
		High-pressure	m³/h 137
	Pressure	Low-pressure	MPa 8.3
		High-pressure	MPa 12
	Max. strokes per minute	Low-pressure	times/min 33
		High-pressure	times/min 22
	Delivery cylinder diameter	mm	260
	Stroke length	mm	1900
	Hydraulic system		Open
	Hydraulic system oil pressure	MPa	32
Chassis Specification	Oil tank capacity	L	680
	Water tank capacity	L	620
	Pipeline size	mm	125
	End hose length	m	3
	End hose diameter	mm	125
	Chassis brand		/
	Chassis model		/
	Engine type		/
	Engine maximum net power	kW/rpm	/
	Emission standard		/
	Capacity of fuel tank	L	/
	Displacement	L	/
	Max. speed	km/h	/



www.sanyglobal.com

SANY Industrial Park, Economic and Technological Development Zone,
Changsha, Hunan, China, 410100
Sales Hotline
Tel: 0086-731-85835199
Mail: sales@sanyglobal.com

Service Hotline
Tel: 0086-4006098318
Mail: CRD@sany.com.cn

The product configuration (including technical parameters) is subject to change and the delivered actual machine without notice.